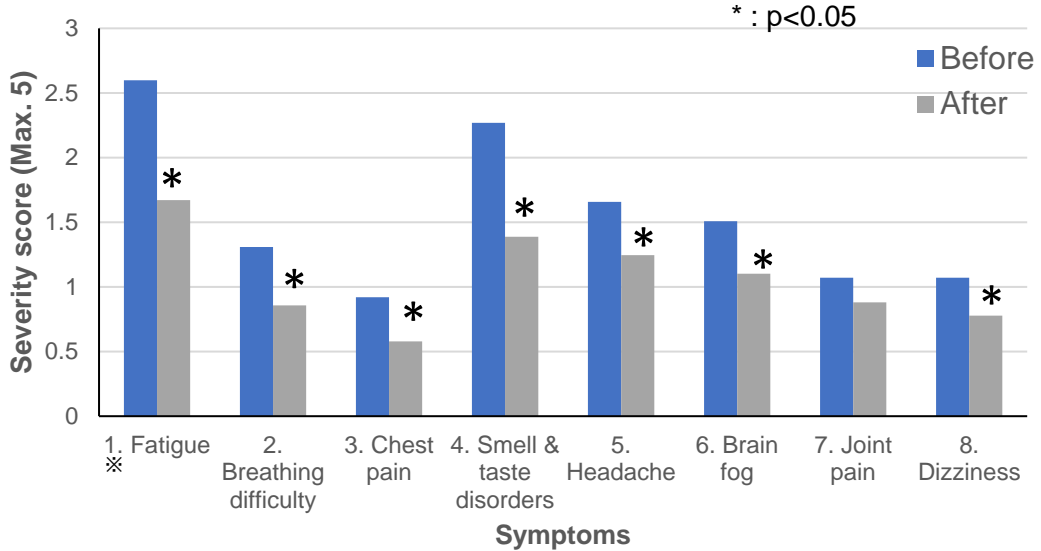


# 【Long COVID-19】

## A. Change in scores of typical symptoms before & after Twendee X (n=126)



## B. Patients with >3 of pre-Twendee X symptom score

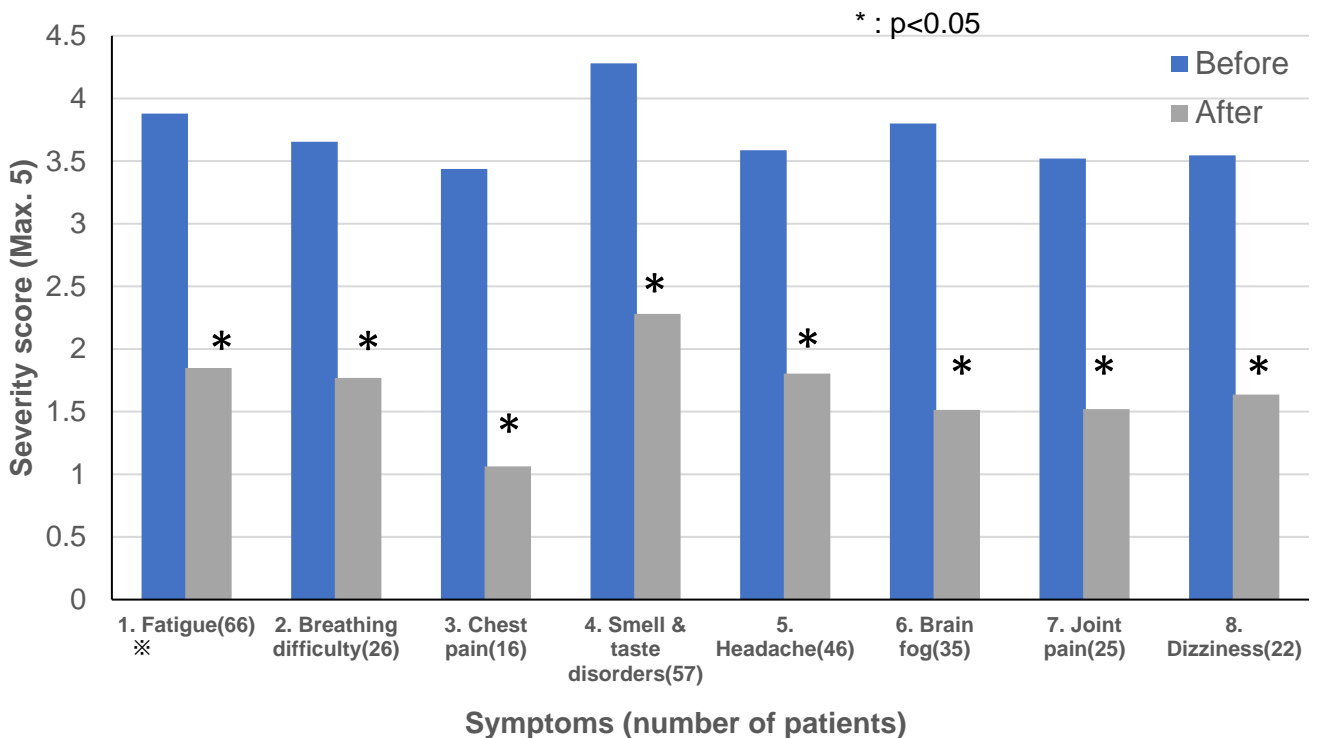
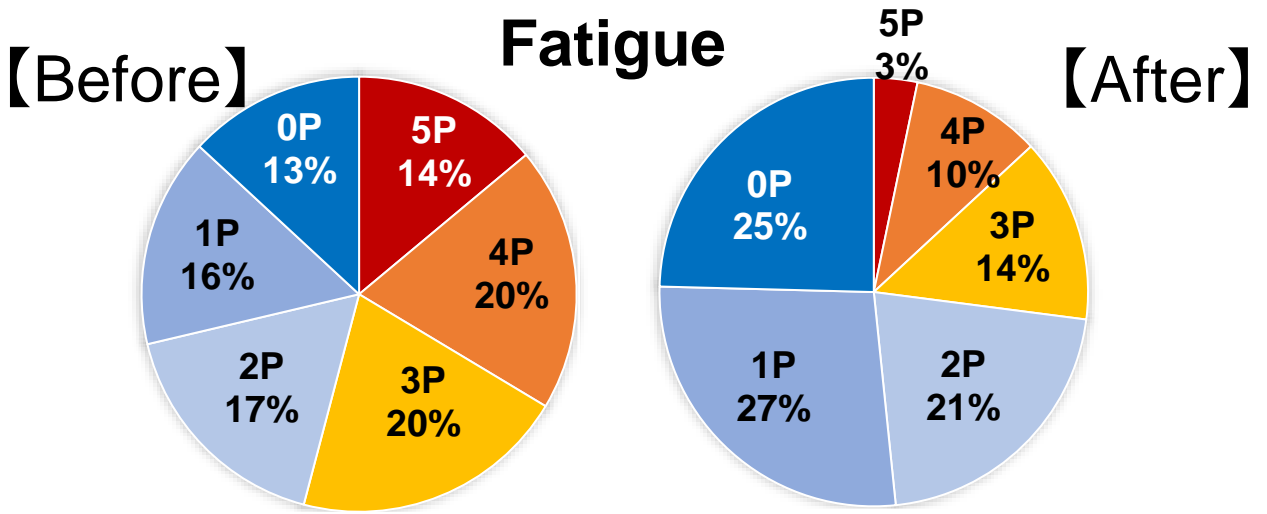
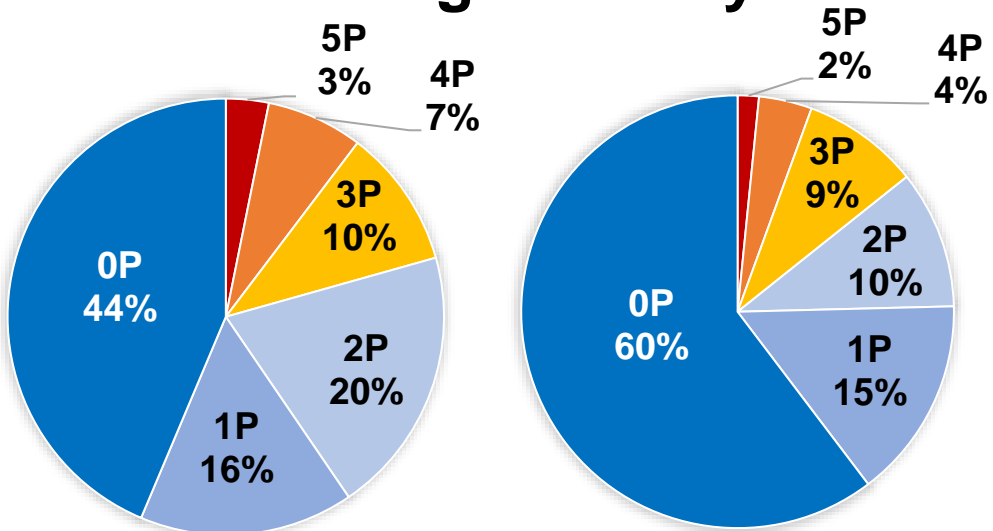


Fig.2

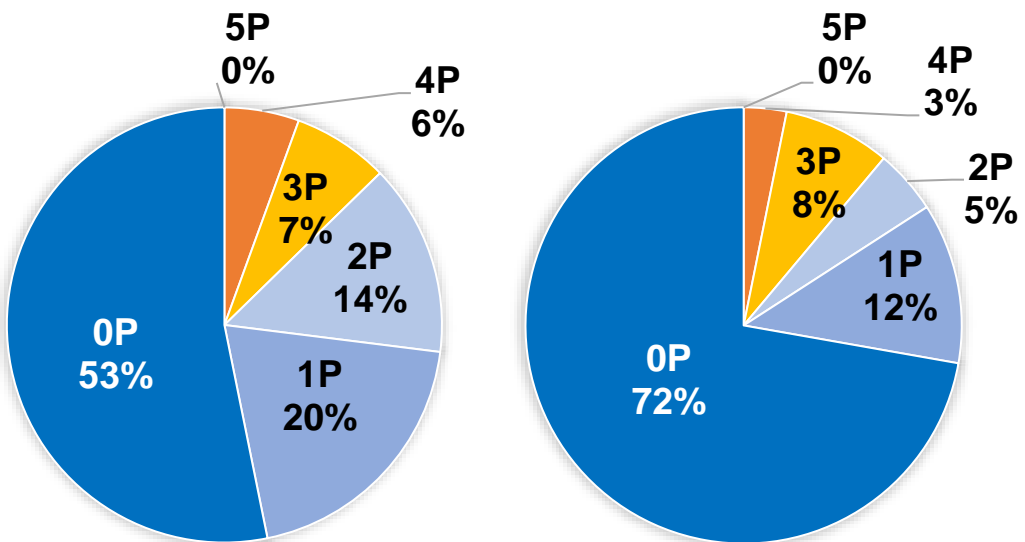
# 【Long COVID-19】



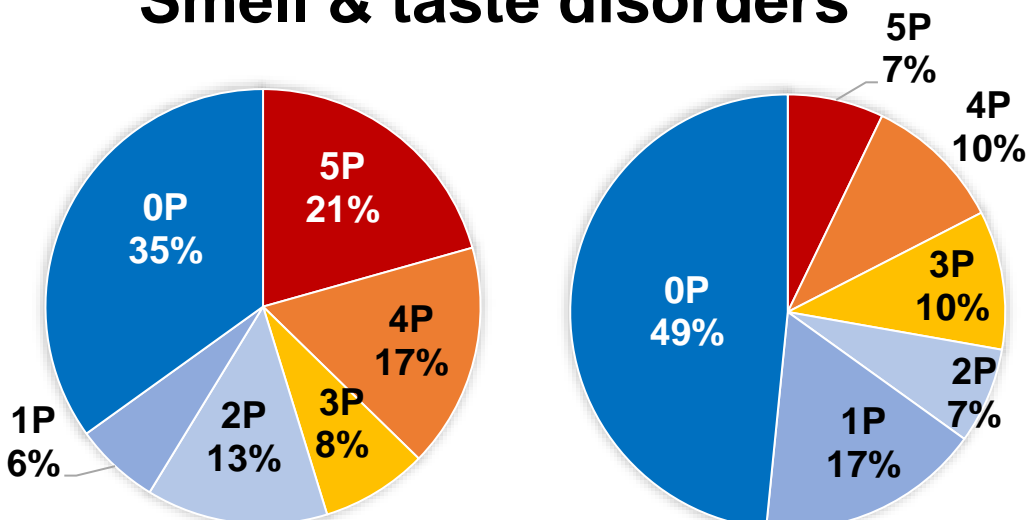
## Breathing difficulty



## Chest pain

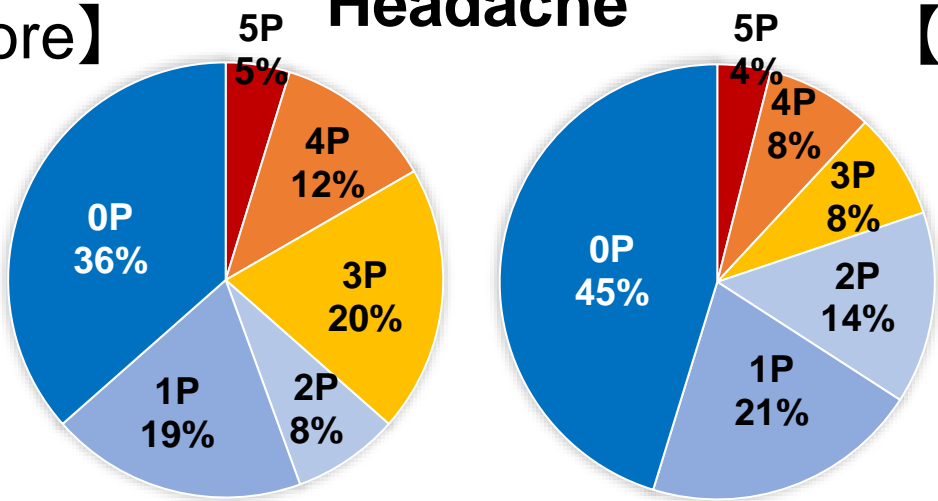


## Smell & taste disorders

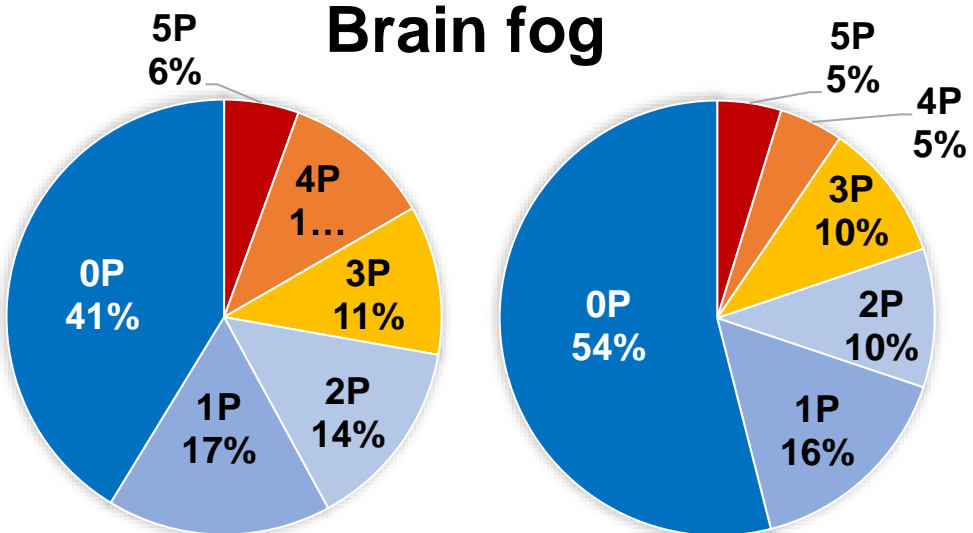


# 【Long COVID-19】

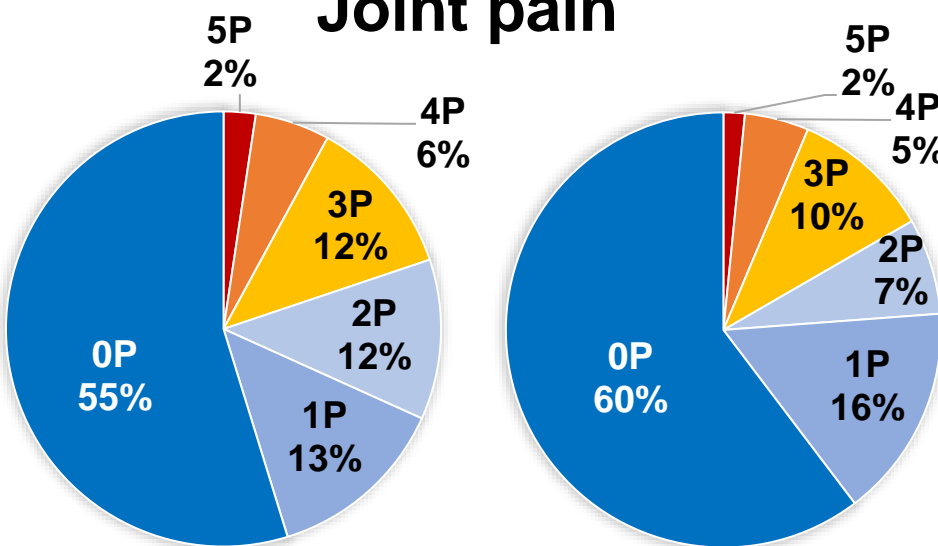
【Before】 **Headache** 【After】



**Brain fog**



**Joint pain**



**Dizziness**

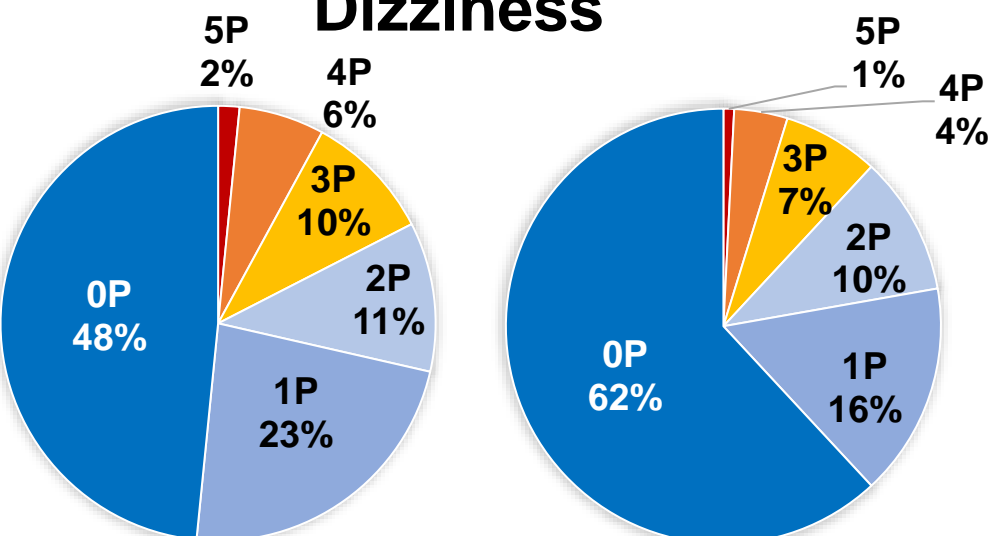


Fig.3